

EIKI DANZUKA THE LANDSCAPE CREATOR PORTOFOLIO

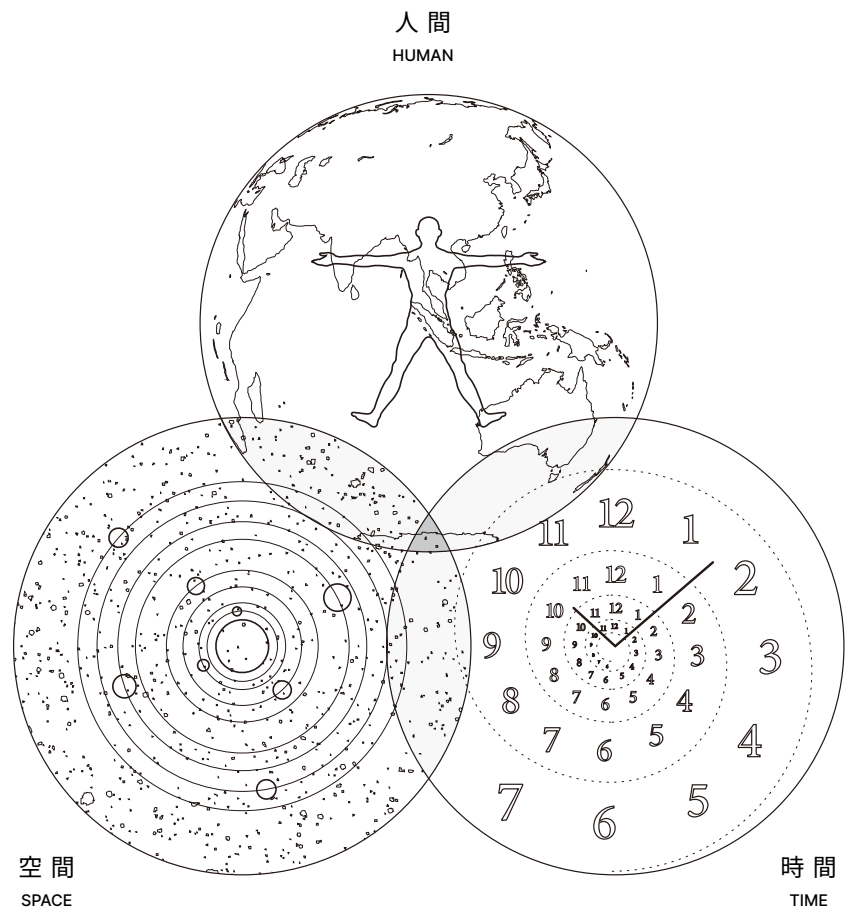
DANZUKA®

Philosophy

ランドスケープ、建築、インテリア、プロダクトやアート。色々な仕事をして気が付いたのは、どの仕事も何かと何かの間を繋いでいる事。例えば、人と人を繋ぐテーブルや椅子のデザイン。人と自然を繋ぐ庭。人と都市を繋ぐ公園。過去と未来を繋ぐアート。考え始めるとキリがないくらいに当てはまる。そこで、プロジェクトを始める前に、人間、空間、時間のダイアグラムを書く様になる。何と何の間をどのように繋ぐと良いのだろうと考える。ランドスケープは直訳すると風景だが、風景をつくるという事は、あらゆる問題点を見つけ、その間を様々な手法で丁寧に繋ぐことで良質な仕上がりになる。風景司を大和言葉では、みわたさるるものつかさ、と読むらしい。風景司の仕事は、まさにトータルデザインではないかと考える。

Landscape, architecture, interior, product and art. What I have noticed in my various jobs is that every job is a connection between something and something else. For example, table and chair design connects people to people. Gardens that connect people to nature. Parks that connect people to the city. Art that connects the past with the future. The list is endless when you start thinking about it. So, before starting a project, I began to draw a diagram of people, space, and time. I think about how to connect between what and what. The literal translation of the word "landscape" is "scenery," but creating a landscape means finding all kinds of problems and carefully connecting them with various methods to create a high-quality result. In the Japanese language, the word "landscape architect" is read as "miwataru mono no tsukasa," which literally means "the director of the landscape. I believe that the work of a landscape architect is truly total design.

Diagram



風景司 (みわたさるるものつかさ)

THE LANDSCAPE CREATOR (MIWATASARURUMONONOTSUKASA)



風景司 THE LANDSCAPE CREATOR

Biography



団塚栄喜（風景司®）

1963年大分県佐伯市大入島生まれ。黒潮の海に浮かぶ小さな島に生まれ、蛍の舞う清流の森に育つ。幼少期の原風景が作品づくりに強い影響を与える。桑沢デザイン研究所を経て、モノ派を代表する美術家・関根伸夫に師事。国内外に時間、空間、人間の「間」を繋ぐ風景を作品として手掛ける。制作活動そのものが地球環境に還っていく持続可能なプロセスを重要視している。多摩美術大学客員教授。東京藝術大学非常勤講師。アースケイプ主宰。都市景観大賞、土木学会 デザイン賞、BCS賞、SDA賞、グッドデザイン賞、AACA賞、英国D&AD Award、米国Green Good Design Awardなどを受賞。2021年には著書『EARTHSCAPE「そこにあるべき」ストーリーを生み出す（風景司）団塚栄喜作品集』（CCCメディアハウス）を発売。アートを通じた環境活動「MHCP/メディカルハーブマンカフェプロジェクト」、「不時泊」などのプロジェクトを展開。

EIKI DANZUKA (THE LANDSCAPE CREATOR)

Born in 1963 on the small island of Ohnyujima in Saiki City, Oita Prefecture, Eiki Danzuka grew up surrounded by the sea breeze carried by the Kuroshio Current and a forest with clear streams where fireflies dance. The scenery etched in his childhood memories profoundly influenced his artistic creations. After attending the Kuwasawa Design School, he studied under Nobuo Sekine, a prominent artist representing the Mono-ha (School of Things) movement. Danzuka's landscape art, both in Japan and overseas, is characterized by his distinct approach to connecting time, space, and human beings. In his attempt to create a landscape as the connecting device, he places significant importance on a sustainable process where his art creation itself returns to the Earth's environment. He is a visiting professor at Tama Art University, a part-time lecturer at Tokyo University of the Arts, and the founder of EARTHSCAPE INC. Notable prizes and awards he has received include the Urban Landscape Award, Civil Engineering Design Prize, BCS Prize, SDA Award, Good Design Award, AACA Honorable Award, D&AD Award in the UK, and the Green Good Design Award in the United States. In 2021, he will publish his book, "EARTHSCAPE: Creating Stories That 'Should Be There' (CCC Media House), a collection of works by Eiki Danzuka, a 'landscape artist' who creates stories that" should be there. He also engages in projects such as the "MHCP/Medical Herberman Cafe Project," "FUJIHAKU," which combines art with nature, community, and environment.

[FACEBOOK](#) [INSTAGRAM](#)

Operating Project

OUTDOOR FURNITURE & PRODUCTS :

 **OUTSIDER®**

[INSTAGRAM](#)

WORLD WELLNESS WATER PROJECT :



[FACEBOOK](#)

MEDICAL HERBMAN CAFE PROJECT :



[OFFICIAL SITE](#)

FUJIHAKU :



[OFFICIAL SITE](#) [INSTAGRAM](#)

DANZUKA®

Selected Works



IROA, 2023



HASO, 2023



MEDICAL HERBMAN CAFE PROJECT, 2009-
【グッドデザイン賞】【グリーン・グッドデザインアワード】



SHIZUOKA DAIICHI-TV, 2022



SHIMOSE ART MUSEUM, 2023



MIYASHITA PARK, 2020



YOKOHAMA BIENNALE, 1996



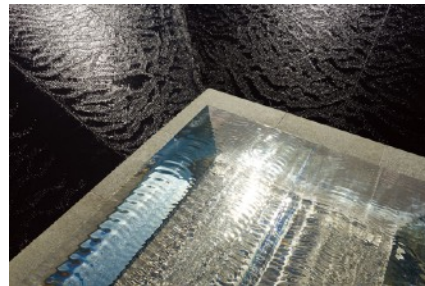
THEO JANSEN EXHIBITION, 2011



LUTEN, 2023



IKUSA, 2019



HAKONE GORA KARAKU, 2020



THREE PENCILS, 2009

DANZUKA®

Selected Works



OUTSIDER® FURNITURE AND PRODUCTS, 2020



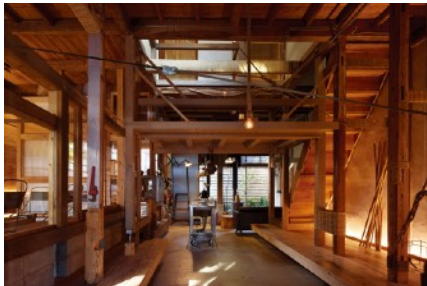
MAEBASHI FUNERAL HALL, 2012



WORLD WATER WELLNESS PROJECT, 2020



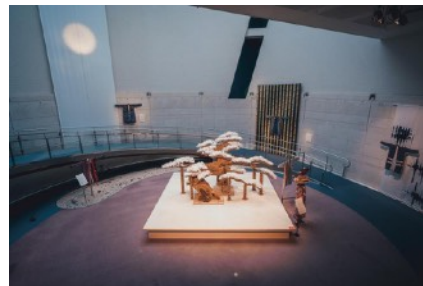
SEIBU IKEBUKURO ROOF GARDEN, 2015



PERMA, 2019



L'ASSIETTE PROJECT, 2019



matohu 日本の眼展, 2020



BEPPU ART MONTH 2010



MEIJI UNIVERSITY, 2005



PROUD TOWER SHINONOME CANAL COURT, 2012



HARUMI TRITON SQUARE, 2001

【BCS賞】【都市景観大賞】



KARESANSUI PARK, 2017

DANZUKA®

Selected Works



OSAKA BAY TOWER, 1992



SIX WAKE ROPPOGI, 2020



GRAND TOWER FUCHU LA AVENUE, 2005



KANAGAWA UNIVERSITY OF HUMAN SERVICES, 2003
【グッドデザイン賞】



SAIKI PEACE PARK, 1997



KASUMIGASEKI COMMON GATE, 2007



BEPPU ART MONTH 2012



URBAN DOCK LALAPORT TOYOSU, 2006
【グッドデザイン賞】



MINATO MIRAI BUSINESS SQUARE, 2004



FUKUOKA FINANCIAL GROUP HEAD OFFICE, 2008



FUKUOKA PREFECTURAL UNIVERSITY
THE FACULTY OF NURSING, 2003



BANCHO NO NIWA, 2015

DANZUKA®

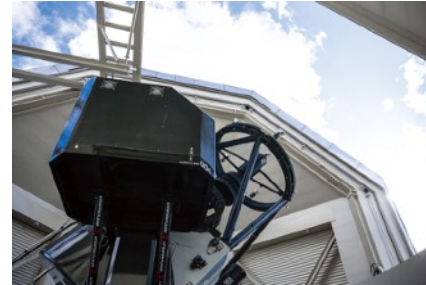
Selected Works



OITA AIRPORT, 2008
【グッドデザイン賞】



LATOUR DAIKANYAMA, 2010
【グッドデザイン賞】



SENDAI ASTRONOMICAL CENTER, 2007



BEPPU ART MONTH 2011



OIZUMI YUMERIA ART PROJECT, 2001



TOHO UNIVERSITY, 2014



HAKONE ASHINOKO HANAORI, 2017



GINZA MITSUI BUILDING, 2005



IIDABASHI PLANO, 2009



PROUD FUCHU MARKS, 2014



PLAYGROUND, 2001



THE JINGUMAE RESIDENCE, 2013

Selected Works



SANCTUS YACHIYO MIDORIGAOKA
FOREST VILLA, 2009



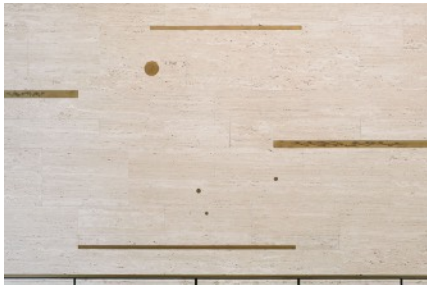
LAZONA KAWASAKI PLAZA, 2006
【グッドデザイン賞】



MITSUI OUTLET PARK TAICHUNG PORT, 2018



GLORY HEAD OFFICE, 2016



PROUD TOWER SHIROKANEDAI, 2014



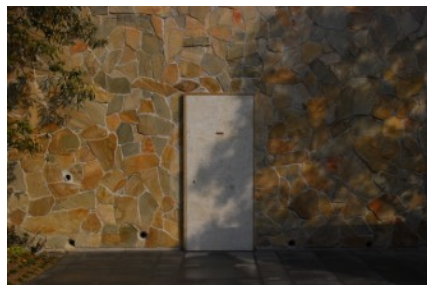
UNIVERSITY OF TAIPEI TIAN-MU CAMPUS, 2014



SHINAGAWA CENTRAL GARDEN, 2004



IWATAYA, 2004



PROUD SHUKUGAWA, 2013



MINAMISOMA CITY CULTURE HALL, 2004
【aaca奨励賞受賞】【BCS賞受賞】



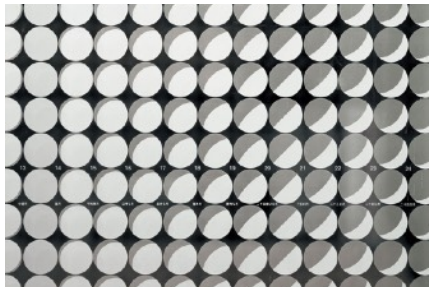
MARUNOUCHI OAZO NORTH BUILDING, 2004



URBAN DOCK PARK CITY TOYOSU, 2008
【グッドデザイン賞】

DANZUKA®

Selected Works



HOGY MEDICAL HEAD OFFICE, 2002

Company Profile

有限会社 アースケイブ

〒108-0023 東京都港区芝浦3-15-4

TEL 03-6450-9588

MAIL info@earthscape.co.jp

Earthscape Inc.

3-15-4 Shibaura, Minato-ku, Tokyo 108-0023 Japan

TEL +813-6450-9588

MAIL info@earthscape.co.jp

DANZUKA®